

Airwell

■ *Just feel well*

USER MANUAL

Airwell Sensibo

WiFi controlling system





■ *Just feel well*

[MEET YOUR AIRWELL SENSIBO]

Airwell Sensibo is a retrofit device that makes any existing remote controlled air conditioner smart.

Airwell Sensibo connects the air conditioner to the internet, allowing you to control it from anywhere using your smartphone. Airwell Sensibo is equipped with many sensors that allow it to determine the optimal climate for your home, adapt to your habits and save energy.

Airwell Sensibo comes with a free smartphone application for iOS and Android.

■ YOU CAN DOWNLOAD THE APPS AT:




→ sensibo.com/android

→ sensibo.com/ios

[INSIDE THE BOX]

■ INSIDE THE BOX YOU WILL FIND TWO PACKAGES:

→ The Smart Hub Package

SMART HUB PACKAGE	
	Smart Hub
	Power Adapter
	Ethernet cable

→ The Airwell Sensibo Pod Package

AIRWELL SENSIBO POD PACKAGE	
	Airwell Sensibo Pod
	2 x CR123A Batteries
	2 extra Command™ adhesive tapes

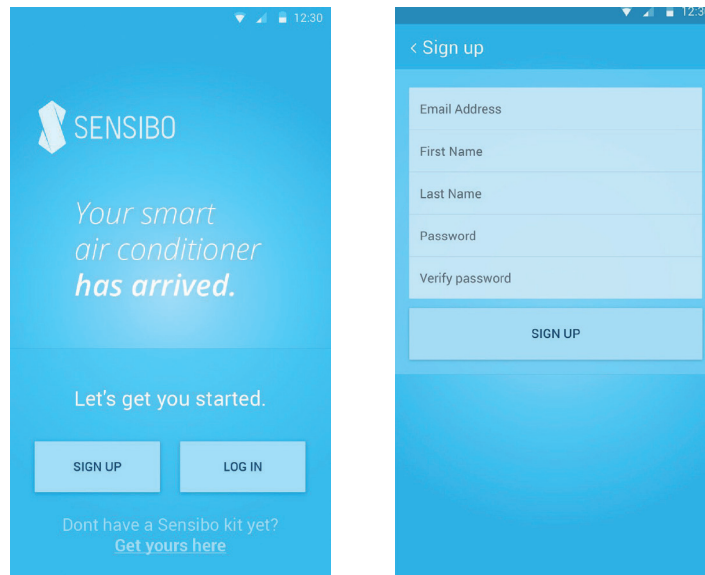
[INSTALLATION INSTRUCTIONS]

The Airwell Sensibo app will guide you in the installation process through a wizard.

■ STEP 1: LOG IN OR SIGN UP

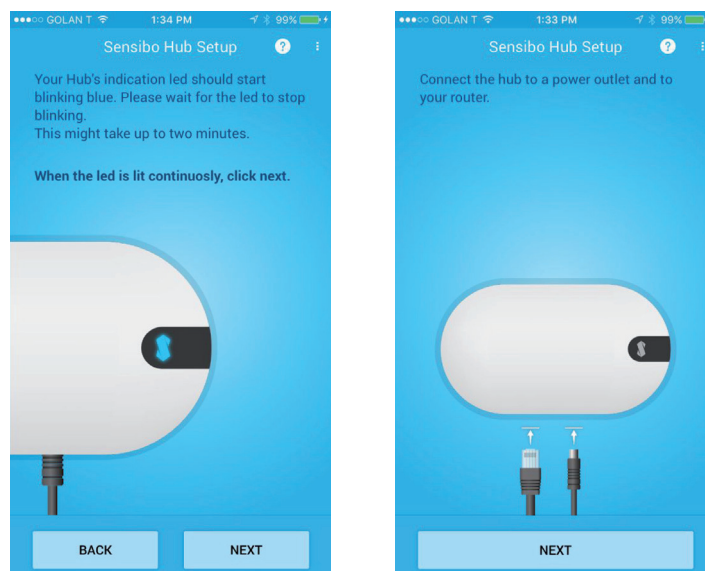
If this is the first time you use Airwell Sensibo, you will need to register for a user account. Press the sign up button and enter a username and password.

If you already have an account, press login and enter your existing username and password.



■ STEP 2: INSTALL THE SMART HUB

- **1.** Plug the smart hub into the outlet.
Make sure the power outlet is safely installed and fits the specified voltage ratings.
Only use the supplied power adapter.
- **2.** The LED will blink in red, green and then blue. After approximately 30 seconds, the Hub's blue light will stop blinking and the LED have a steady blue light.
- **3.** Connect one end of the supplied ethernet cable to one of the LAN connections in your home router and the second end to the Airwell Sensibo smart hub.



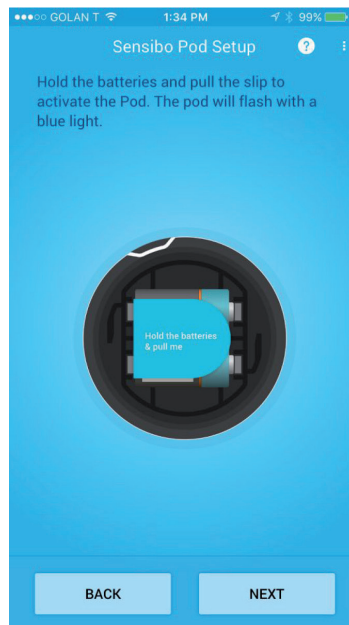


■ *Just feel well*

■ STEP 3: INSTALL YOUR AIRWELL SENSIBO POD

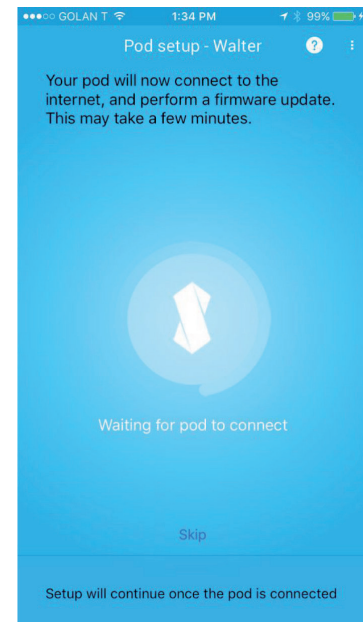
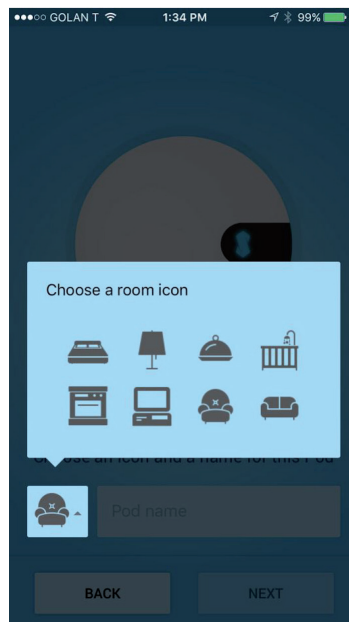
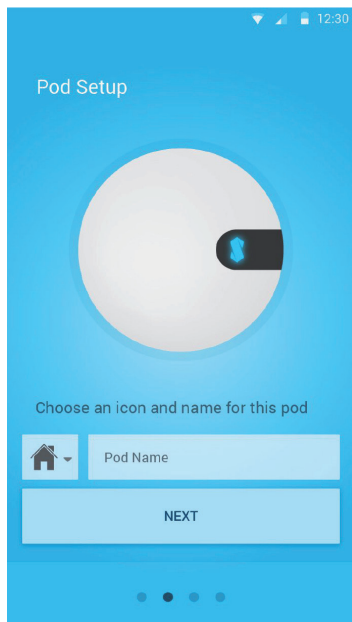
→ Stage 1

Open the Pod's battery compartment and scan the QR code in the back of the Pod.



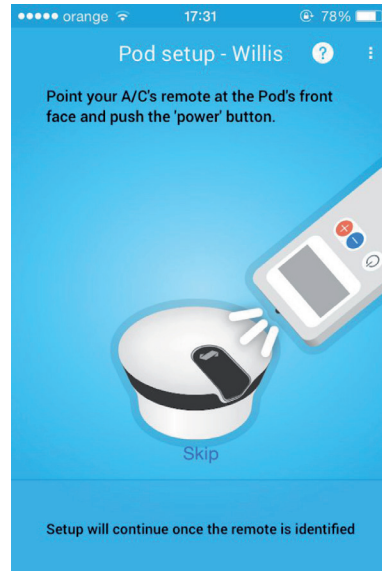
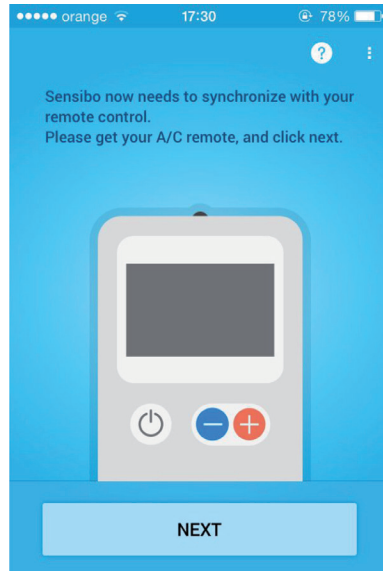
→ Stage 2

Choose a name and icon for your Pod. The recommended name is the room in which the Pod is located (e.g. Living Room, Bedroom, etc.) as well as a suitable icon.



→ Stage 3

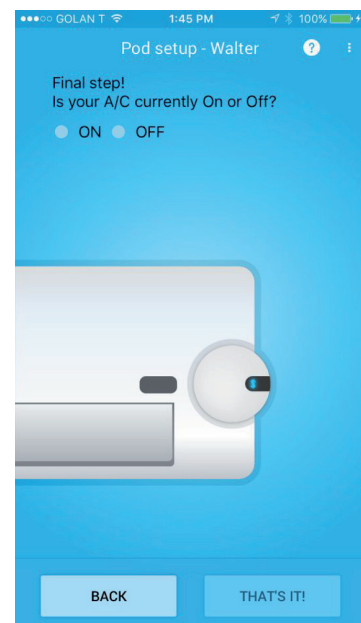
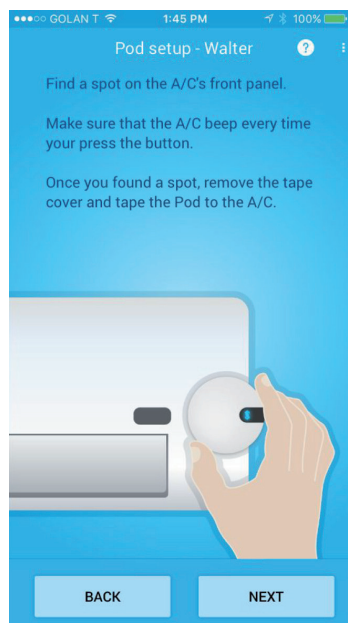
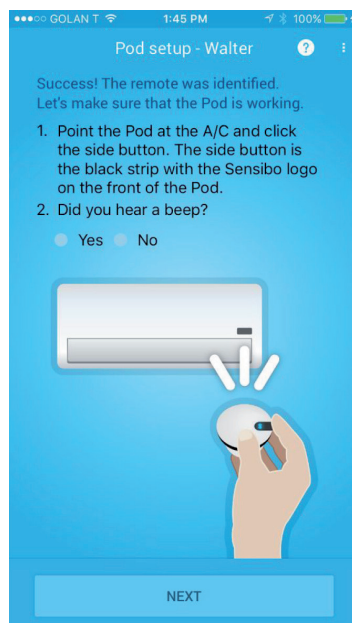
Airwell Sensibo comes with an automatic identification process for your air conditioner. You will be asked to press the on/off button on your remote control, pointing it to your Sensibo Pod.



→ Stage 4

Place the Sensibo Pod on top of your air conditioner unit.

The app will guide you where to place the Pod and how to ensure it'll stay in place find a clean spot on your AC, make sure the Pod can communicate well with the AC from that area, peel the sticker cover and hold the Pod in place for 30 seconds.

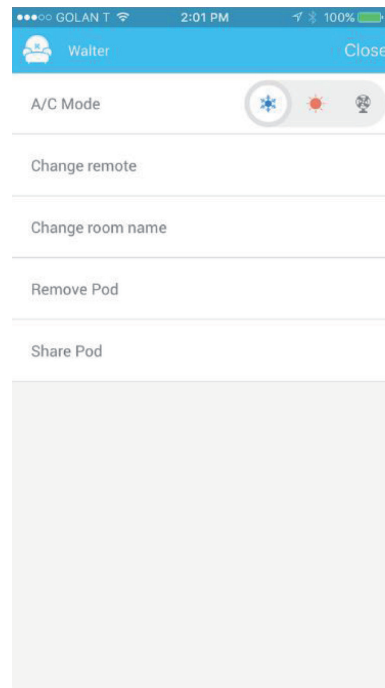
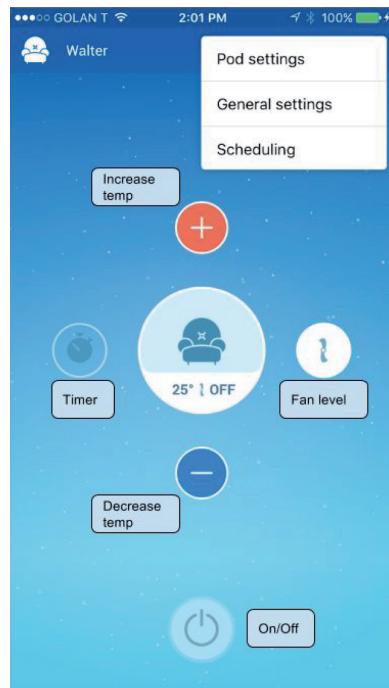




■ Just feel well

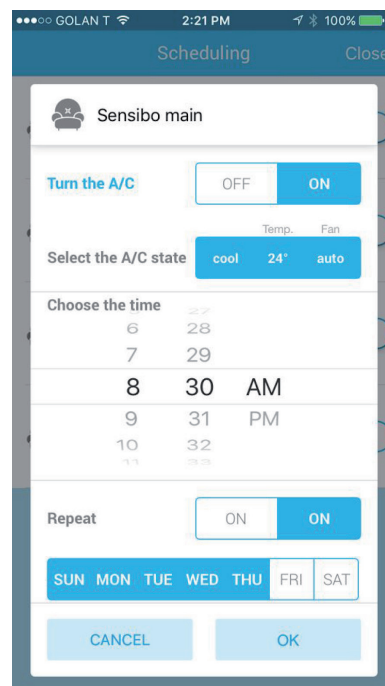
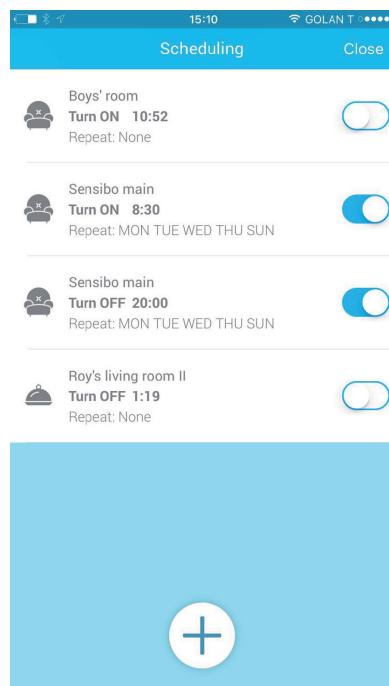
[THE AIRWELL SENSIBO APP]

The main screen of the Airwell Sensibo app shows information about the current temperature and humidity in the room and lets you control your air conditioner's settings such as fan level, mode, setting a timer etc.



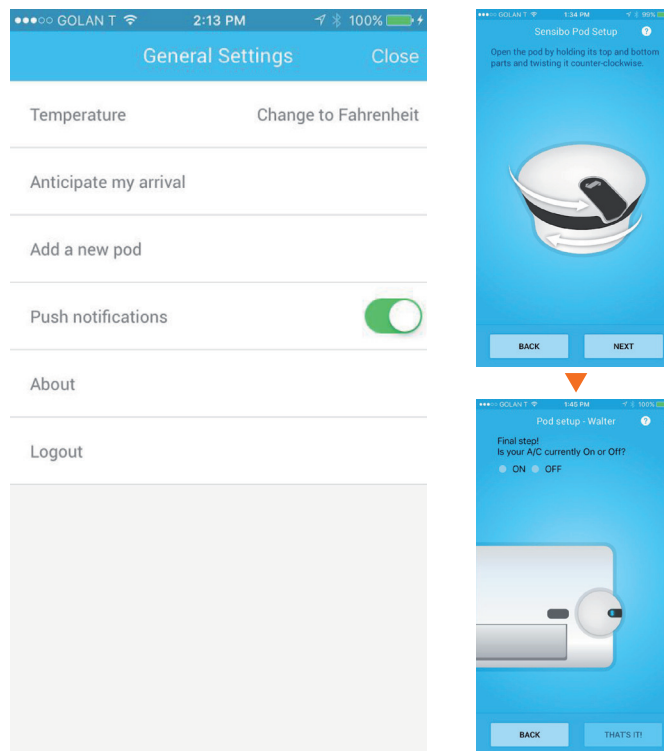
■ SCHEDULING

With Airwell Sensibo you can automate on/off commands for the AC choose the desired action (on or off), AC state (heating, cooling or fan mode), goal temperature, fan level, when and should this rule repeat weekly (and on which days).



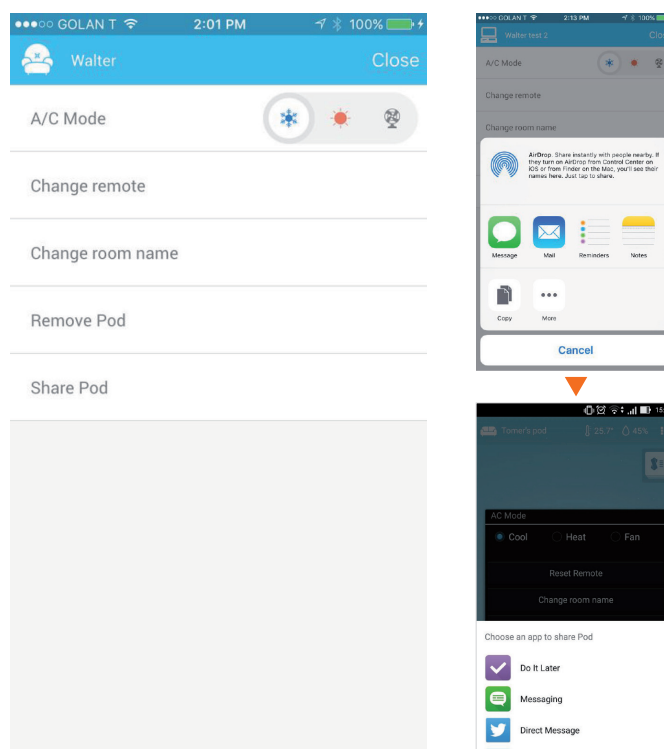
■ ADDING A NEW POD

You can add setup a new Pod via the General Settings menu (accessible via the menu on the pod screen) the app will guide you through the stages, starting from the QR scan.



■ SHARING THE POD WITH OTHER USERS (FAMILY, FRIENDS, CATSITTER...)

You can share a Pod from your account with any other user that has the Airwell Sensibo app via email, instant messaging apps, etc. If the recipient does not have Airwell Sensibo installed, the invitation link will open the app's page in the suitable app market (following the link after installation will grant access to that user).

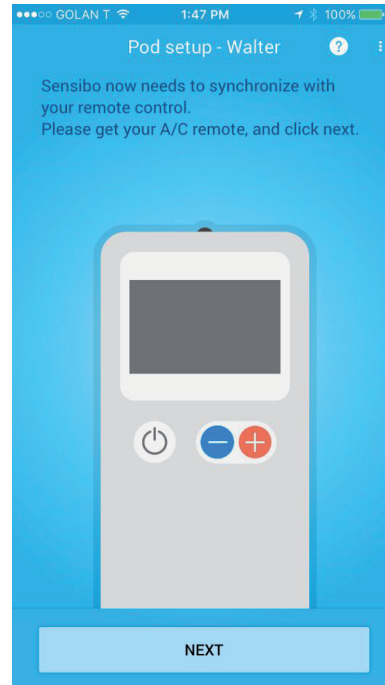
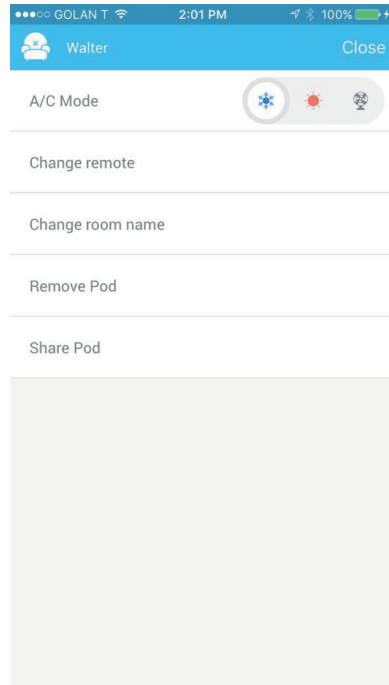




■ Just feel well

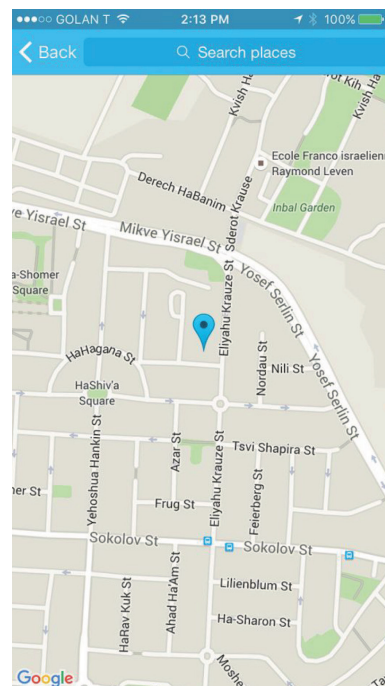
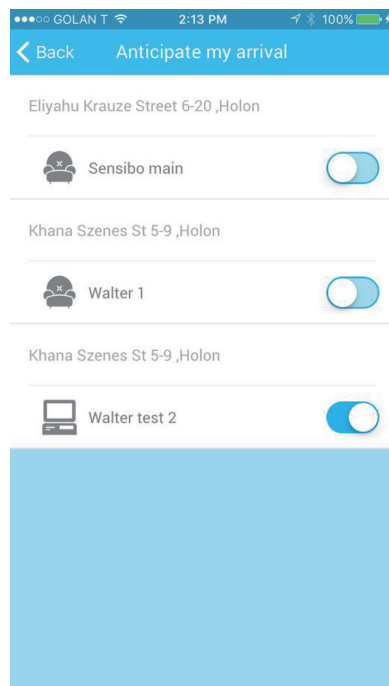
■ RESET REMOTE

Congratulations on your new home/buying a new AC! To pair your existing Pod with a different AC model, start the remote recognition process again accessible via the Pod menu.



■ ANTICIPATE MY ARRIVAL

You can set pods to automatically turn on when you approach the location (your house, office, etc.). This feature requires location services to be on.



[GENERAL MAINTENANCE]

Airwell Sensibo doesn't need any special maintenance. With normal usage the batteries last between a year and three years. You will get a notification in the app when batteries need to be replaced.

[SAFETY]

- **1.** When connecting the smart hub to the electricity, make sure the power outlet is safely installed and fits the specified voltage ratings. **Only use the supplied power adapter.**
- **2.** When attaching the pod to the air conditioner, make sure to press firmly for at least 3 seconds before leaving.
- **3.** Attach the pod only to a clean plastic surface and use only the supplied tape. In case you need more tape, please contact info@sensibo.com and we will be glad to help by sending you additional adhesive tapes.
- **4.** Do not use the system in extreme conditions. Airwell Sensibo should be used in a home environment, with temperature ranging between 0 °C and 40°C and humidity between 5%-95%.
- **5.** Air conditioners are often high and you may need a ladder to attach the pod to the A/C unit. Make sure the ladder is stable and be extra careful to keep your balance. It is recommended to have another person while climbing a ladder.
- **6.** Do not get the Airwell Sensibo Hub or Pod in contact with water. For cleaning, use dry cloth.

Our Aftersales Service

Export

Tel. ■ **+33 (0)1 76 21 82 95**

Fax ■ **+33 (0)1 76 21 82 96**

SPARE PARTS ORDERS:
e-mail ■ **sp@airwell-res.com**

TECHNICAL SUPPORT:
e-mail ■ **technical-sp@airwell-res.com**